



# Ceramic Clays



CERAMICA COLLET S.A.  
Since 1874

2023



# CERAMICA COLLET S.A.

## Since 1874

### Always in your hands

Since 1874. We are a manufacturer of ceramic clays for industry, pottery and artistic ceramics, and natural modelling clays for crafts, fine arts and education.

Our target is to innovate, developing products with natural clays that, in their multiple applications, meet the needs of the most demanding users. In each of our products we use experience and passion, taking care of every detail from the conception of the product to the final manufacturing process.

The Quality System, certified according to ISO 9001:2015, is our framework for continuous improvement, and Social Responsibility and respect and care for the Environment are fundamental points in the philosophy of our firm.



Preparation of clay in settling ponds in L'Hospitalet factory, early 20th century



Headquarters, factory and warehouse of SIO-2 in Esparreguera (Barcelona)



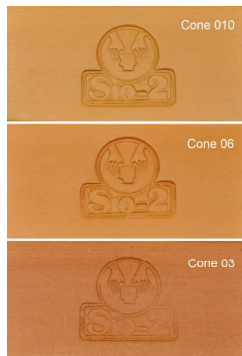


# Low Fire Clays



## PF

### Red Earthenware Clay | Cone 06-04



Traditional red earthenware clay body. It is a high quality and polyvalent clay, very popular for its fineness and excellent plasticity. Its coefficients of thermal expansion are ideal for standard pottery glazes, in both single and twice firing processes. Incredible results in reducing atmosphere can be obtained (metallic reflection technique). Available in extruded body (moist form), being suitable for wheel-throwing, shaping and modeling.

Firing range .....	Cone 06-04
Water content .....	22%
Plasticity (IP Atterberg) .....	17
Carbonate content (CaCO <sub>3</sub> ) .....	10%
Drying shrinkage .....	5.5%
Firing shrinkage at Cone 06 .....	0.6%
Porosity (water absorption) at Cone 06 .....	13.5%
Dry bending strength .....	6.6 N/mm <sup>2</sup>
Fired bending strength at Cone 06 .....	27.9 N/mm <sup>2</sup>
Thermal coefficient (α25-500°C) .....	77.7×10 <sup>-7</sup> °C <sup>-1</sup>

Item Number .....	10 100 201
UPC .....	8422830101016
Supply .....	Film-wrapped pack + carton box
Packing weight .....	27.6 lb (12.5 kg)



PF Prado Morales Gómez - My Escape Pottery



### Maryvonne et Jean-Pierre Baillieux

Atelier "A la fortune du pot",  
Saint Paul et Valmalle, France

« La SIO-2... j'adore  
J'en mange tous les jours!\*  
J'ai "Des Cousins" en or...  
Et quand j' suis à court...  
A Aubagne aux Paluds,  
j'm'en gave. "on n'peut plus"  
(\*et ça rend pas triste...) »

SIO-2... I love it  
I eat it every day!\*  
I have "Les Cousins" in gold...  
And when I've run out of it...  
In Aubagne at Les Paluds,  
I stuff myself, "I can no more"  
(\*and it make me happy)

## White Earthenware Clay | Cone 05-03

White earthenware clay body especially formulated for wheel-throwing and modeling. It is a high quality and polyvalent clay, very popular for its fineness and plasticity. Its balanced calcium carbonate content confers higher stability than traditional white earthenware clays. Its coefficients of thermal expansion are ideal for standard pottery glazes, in both single and twice firing processes. Available in extruded body (moist form), being suitable for wheel-throwing, shaping and modeling.

Firing range (biscuit)	Cone 05-03
Water content	20%
Plasticity (IP Atterberg)	16
Carbonate content (CaCO <sub>3</sub> )	17%
Drying shrinkage	6.8%
Firing shrinkage at Cone 04	-0.4%
Porosity (water absorption) at Cone 04	12.3%
Dry bending strength	5.1 N/mm <sup>2</sup>
Fired bending strength at Cone 04	27.8 N/mm <sup>2</sup>
Thermal coefficient (α25-500°C)	79.1×10 <sup>-7</sup> °C <sup>-1</sup>

Item Number	10 400 201
UPC	8422830104017
Supply	Film-wrapped pack + carton box
Packing weight	27.6 lb (12.5 kg)

# PA



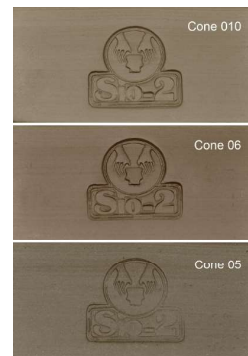
## Black Earthenware Clay | Cone 06-05

Black earthenware clay body. Its black color in oxidizing atmosphere is a highlight in the range of low firing colors. Its fineness and plasticity make it an excellent choice for throwing and modelling. Very good behavior with standard pottery glazes. Available in extruded body (moist form), being suitable for wheel-throwing, shaping and modeling.

Firing range	Cone 06-05
Water content	21%
Plasticity (IP Atterberg)	16
Carbonate content (CaCO <sub>3</sub> )	8%
Drying shrinkage	5.0%
Firing shrinkage at Cone 06	0.9%
Porosity (water absorption) at Cone 06	14.3%
Dry bending strength	4.5 N/mm <sup>2</sup>
Fired bending strength at Cone 06	28.9 N/mm <sup>2</sup>
Thermal coefficient (α25-500°C)	77.9×10 <sup>-7</sup> °C <sup>-1</sup>

Item Number	10 800 201
UPC	8422830108015
Supply	Film-wrapped pack + carton box
Packing weight	27.6 lb (12.5 kg)

# PM



### Vicente Rivera

Ceramista, Vuelasola y Hombrepez, Barcelona

"Hace más de 15 años que conocí las pastas cerámicas SIO-2 y las uso desde entonces. Principalmente, utilizo, al torno, las pastas de baja temperatura PA, PF y PM. Estas, me ofrecen buena plasticidad y diferentes colores. Para el trabajo

con alumnos o cuando las uso para hacer planchas, elijo las referencias con chamota PACHF ya que me ofrecen más seguridad y resistencia, sin riesgo de roturas. También uso PA como base para hacer algunos engobes de colores".

I have known about SIO-2 ceramics bodies for 15 years and I continue to use it now. I use, mostly, low fire ceramic bodies, as PA, PR or PM, which offers me a good plasticity and different colours. To work with students or make even surfaces, I choose grogged references, like PACHF, which offers more security and resistance, without risk of cracks. I also use PA as a base for making underglaze colours.



# High Fire Clays



@bienveceramics  
PRAI

## PRAI

### White Stoneware Clay with Impalpable Grog | Cone 6-10



White stoneware clay body with 40% impalpable grog (up to 80 Mesh). Formulated for artistic ceramics, it is ideal for wheel-throwing and modeling smooth pieces with fine details. The high content of grog confers an excellent behavior during drying and firing. Its particular ivory color after firing is much appreciated and provides an excellent ware for glazes and coloring oxides, which develop bright and intense tones. Available in extruded body (moist form).

Firing range .....	Cone 6-10
Biscuit .....	Cone 06
Water content .....	19%
Plasticity (IP Atterberg) .....	16
Carbonate content (CaCO <sub>3</sub> ) .....	0%
Drying shrinkage .....	5.9%
Firing shrinkage at Cone 10 .....	7.0%
Porosity (water absorption) at Cone 10 .....	0.0%
Dry bending strength .....	3.0 N/mm <sup>2</sup>
Fired bending strength at Cone 10 .....	45.3 N/mm <sup>2</sup>
Thermal coefficient (α25-500°C) .....	52.6×10 <sup>-7</sup> °C <sup>-1</sup>

Item Number .....	13 310 201
UPC .....	8422830133031
Supply .....	Film-wrapped pack + carton box
Packing weight .....	27.6 lb (12.5 kg)



PRAI Miguel Molet 'Anatomías de la Forma'



### Carl Mankert

Artist and Teacher,  
based in Chicago (IL), USA

"The SIO-2 line of clay bodies are a pleasure to work with. High quality and reliability are important properties to me and SIO-2 is a great partner and friend in the studio. Much of my work is functional and designed for the kitchen. PRAI stoneware offers great strength and durability for objects such as

mugs, plates and bowls that get everyday use. The PRAI body has a bright color that takes my glaze and decoration very well".

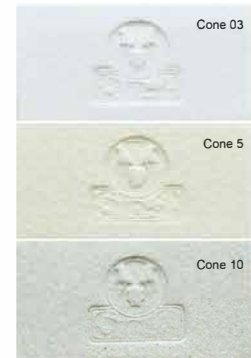
Es un placer trabajar con la línea SIO-2 de pastas cerámicas. La alta calidad y la fiabilidad son propiedades importantes para mí y SIO-2 es un gran compañero y amigo en el estudio. Gran parte de mi trabajo es funcional y diseñado para la cocina. El gres PRAI ofrece una gran resistencia y durabilidad para objetos como tazas, platos y cuencos que se usan a diario. La pasta PRAI tiene un color brillante que funciona muy bien con mis esmaltes y decoración.

## White Sculpture/Raku Clay with Fine Grog | Cone 6-10

White sculpture and Raku clay body with 40% fine grog (up to 35 Mesh). Formulated for artistic ceramics, it is ideal for sculpture, murals and Raku pieces. The high content of grog confers a beautiful textured surface and an excellent behavior during drying and firing. Its particular ivory color after firing is much appreciated and provides an excellent ware for glazes and coloring oxides, which develop bright and intense tones. It is also known as "Rafael" clay, and it is very popular because of its excellent behavior for Raku. Available in extruded body (moist form).

Firing range .....	Cone 6-10
Biscuit .....	Cone 06
Water content .....	17%
Plasticity (IP Atterberg) .....	16
Carbonate content (CaCO <sub>3</sub> ) .....	0%
Drying shrinkage .....	5.4%
Firing shrinkage at Cone 10 .....	4.6%
Porosity (water absorption) at Cone 10 .....	4.1%
Dry bending strength .....	2.4 N/mm <sup>2</sup>
Fired bending strength at Cone 10 .....	26.2 N/mm <sup>2</sup>
Thermal coefficient (α25-500°C) .....	55.9×10 <sup>-7</sup> °C <sup>-1</sup>
Item Number .....	13 320 201
UPC .....	8422830133017
Supply .....	Film-wrapped pack + carton box
Packing weight .....	27.6 lb (12.5 kg)

# PRAF



PRAF Sophie Aguilera 'Accidente Doméstico #1'



PRAI @ki\_ceramics

### Sophie Aguilera

Artista

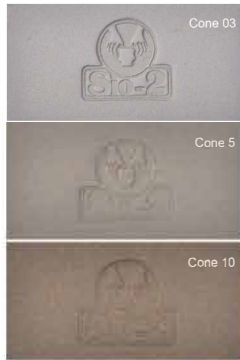
"Recomiendo a cualquier profesional de la cerámica el uso de las pastas SIO-2 por los siguientes motivos: su amplia gama, su versatilidad y la alta calidad de sus productos. Mi barro de referencia es el PRAF ya que me permite realizar sin ninguna dificultad piezas de gran formato. Destacaría su excelente plasticidad, su precisión en el modelado y su buen comportamiento durante secado y horneado".

I recommend to every professional in ceramics to use SIO-2 ceramic bodies for these reasons: its wide range, its versatility and its high-quality products. My clay reference is PRAF because it allows me to make, without difficulties, big format pieces. I want to highlight its excellent plasticity, its modelling precision and its good performance during drying and firing.



# Berlin

## Gray Stoneware Clay with Impalpable Grog | Cone 5-10



Gray stoneware clay body with 40% impalpable grog (up to 80 Mesh). Formulated for artistic and decorative ceramics, it is ideal for wheel-throwing and modeling smooth pieces with fine details. The high content of grog confers an excellent behavior during drying and firing. Depending on the firing temperature, it develops an interesting range of grays, from cement to dark gray, which satisfies the most avant-garde trends in artistic ceramics. Suitable for tableware (food-safe), according to ISO 6486. Available in extruded body (moist form).

Firing range .....	Cone 5-10
Biscuit temperature .....	Cone 06
Water content .....	19%
Plasticity (IP Atterberg) .....	16
Carbonate content (CaCO <sub>3</sub> ) .....	0%
Drying shrinkage .....	5.7%
Firing shrinkage at Cone 10 .....	6.7%
Porosity (water absorption) at Cone 10 .....	0.1%
Dry bending strength .....	2.9 N/mm <sup>2</sup>
Fired bending strength at Cone 10 .....	42.9 N/mm <sup>2</sup>
Thermal coefficient (α25-500°C) .....	53.8×10 <sup>-7</sup> °C <sup>-1</sup>
Item Number .....	14 510 001
UPC .....	8422830145034
Supply .....	Film-wrapped pack + carton box
Packing weight .....	27.6 lb (12.5 kg)



# Zumaia

## Gray Sculpture Clay with Fine Grog | Cone 5-10



Gray sculpture clay body with 40% fine grog (up to 35 Mesh). Formulated for artistic and decorative ceramics, it is ideal for sculpture and pieces for outdoors (garden pots, tiles, etc.). The high content of grog confers a beautiful textured surface and an excellent behavior during drying and firing. Depending on the firing temperature, it develops an interesting range of grays, from cement to dark gray, which satisfies the most avant-garde trends in artistic and decorative ceramics. Available in extruded body (moist form).

Firing range .....	Cone 5-10
Biscuit .....	Cone 06
Water content .....	17%
Plasticity (IP Atterberg) .....	16
Carbonate content (CaCO <sub>3</sub> ) .....	0%
Drying shrinkage .....	5.5%
Firing shrinkage at Cone 10 .....	3.9%
Porosity (water absorption) at Cone 10 .....	2.6%
Dry bending strength .....	2.5 N/mm <sup>2</sup>
Fired bending strength at Cone 10 .....	37.8 N/mm <sup>2</sup>
Thermal coefficient (α25-500°C) .....	59.9×10 <sup>-7</sup> °C <sup>-1</sup>
Item Number .....	14 520 201
UPC .....	8422830145010
Supply .....	Film-wrapped pack + carton box
Packing weight .....	27.6 lb (12.5 kg)



**Agustina Garrigou**  
Ceramista, Barcelona

“Desde que utilizo las pastas de SIO-2, he pasado a experimentar más con los otros aspectos de la cerámica, como son los esmaltes y las formas. Esto se debe a que las pastas son tan buenas y consistentes que no me tengo que preocupar por que surjan defectos a causa de las mismas. Son fáciles de torrear, de modelar, soportan peso y no se agrietan con el cuidado pertinente. He tenido la suerte de probar la nueva pasta Berlín para corroborar que nuevamente ofrecen una pasta de alta calidad y con un color muy especial. No veo la hora de emplearla en mis nuevas piezas”.

Since I have been using SIO-2 clays, I have experimented more with the other aspects of ceramics, such as glazes and shapes. This is because clays are so good and consistent that I don't have to worry about defects arising from them. They are easy to throw, shape, bear weight, and will not crack with proper care. I have been lucky enough to try Berlin clay to confirm that, once again, it is offered a high-quality clay with a very special colour. I can't wait to use it in my next works.

©Sylvain Deleu

## Caramel Stoneware Clay with impalpable Grog | Cone 5-10

Caramel stoneware clay with 40% impalpable grog 0-0.2 mm (up to 80 Mesh). Formulated for artistic ceramics, it is ideal for throwing and modelling smooth pieces with fine details. The high content of grog confers an excellent behaviour during drying and firing. Depending on the firing temperature, it develops a beautiful range of natural tones, from oatmeal beige to caramel brown, which create a warm base that is highly appreciated in ceramic decoration. Suitable for tableware (food-safe), according to ISO 6486. Available in extruded body (moist form).

Firing range	Cone 5-10
Biscuit temperature	Cone 06
Water content	19%
Plasticity (IP Atterberg)	13
Carbonate content (CaCO <sub>3</sub> )	0%
Drying shrinkage	6.2%
Firing shrinkage at Cone 10	5.6%
Porosity (water absorption) at Cone 10	0.1%
Dry bending strength	3.5 N/mm <sup>2</sup>
Fired bending strength at Cone 10	45.5 N/mm <sup>2</sup>
Thermal coefficient (α25-500°C)	50.8×10 <sup>-7</sup> °C <sup>-1</sup>

Item Number	14 610 001
UPC	8422830146017
Supply	Film-wrapped pack + carton box
Packing weight	27.6 lb (12.5 kg)

## Toffee



**FOOD SAFE**



TOFFEE Maria Maceira



BERLIN Agustina Garrigou



### Maria Maceira

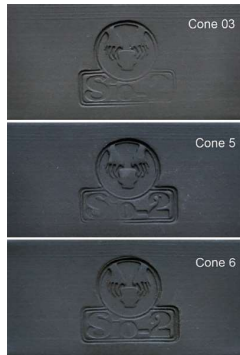
Ceramista, Barcelona

“Trabajo con pastas SIO-2 desde hace años por su gran calidad y óptimo comportamiento. Me encanta la variedad de colores y texturas de su amplia gama de productos, con predilección por las pastas Tooffee, Barcino y PRNF. Me ha gustado mucho la tonalidad de la nueva pasta Tooffee, el color café en crudo y el color tostado tras la cocción”.

I have been working with SIO-2 clays for years due to its high quality and optimal behavior. I love the variety of colors and textures of its wide range of products, with a predilection for Tooffee, Barcino and PRNF clay. I really liked the tonality of the new Tooffee clay, the brown color in raw and the toasted color after cooking.



# PRNI



## Black Stoneware Clay with Impalpable Grog | Cone 5-6

Black stoneware clay body with 40% impalpable grog (up to 80 Mesh). Formulated for artistic ceramics, it is ideal for wheel-throwing and modeling smooth pieces with fine details. The high content of grog confers an excellent behavior during drying and firing. Its beautiful and intense black firing color in oxidizing atmosphere is very exclusive of PRN range and becomes an ideal artistic mean of expression. In reducing atmosphere, metallic effects with shades of blue are obtained. Suitable for tableware (food-safe), according to ISO 6486. Available in extruded body (moist form).

Firing range .....	Cone 5-6
Biscuit .....	Cone 06
Water content .....	21%
Plasticity (IP Atterberg) .....	22
Carbonate content (CaCO <sub>3</sub> ) .....	0%
Drying shrinkage .....	7.0%
Firing shrinkage at Cone 6 .....	7.1%
Porosity (water absorption) at Cone 6 .....	1.3%
Dry bending strength .....	4.6 N/mm <sup>2</sup>
Fired bending strength at Cone 6 .....	33.3 N/mm <sup>2</sup>
Thermal coefficient (α25-500°C) .....	51.1×10 <sup>-7</sup> °C <sup>-1</sup>
Item Number .....	13 610 201
UPC .....	8422830136032
Supply .....	Film-wrapped pack + carton box
Packing weight .....	27.6 lb (12.5 kg)


# PRNF



## Black Sculpture Clay with Fine Grog | Cone 5-7

Black sculpture clay body with 40% fine grog (up to 35 Mesh). Formulated for artistic ceramics, it is ideal for sculpture. The high content of grog confers a beautiful textured surface and an excellent behavior during drying and firing. Its beautiful and intense black firing color in oxidizing atmosphere is very exclusive of PRN range and becomes an ideal artistic mean of expression. In reducing atmosphere, metallic effects with shades of blue are obtained. Available in extruded body (moist form).

Firing range .....	Cone 5-7
Biscuit .....	Cone 06
Water content .....	21%
Plasticity (IP Atterberg) .....	22
Carbonate content (CaCO <sub>3</sub> ) .....	0%
Drying shrinkage .....	7.0%
Firing shrinkage at Cone 7 .....	4.5%
Porosity (water absorption) at Cone 7 .....	9.4%
Dry bending strength .....	2.0 N/mm <sup>2</sup>
Fired bending strength at Cone 7 .....	27.5 N/mm <sup>2</sup>
Thermal coefficient (α25-500°C) .....	55.8×10 <sup>-7</sup> °C <sup>-1</sup>
Item Number .....	13 620 201
UPC .....	8422830136018
Supply .....	Film-wrapped pack + carton box
Packing weight .....	27.6 lb (12.5 kg)



**Petra Lindenbauer**  
Ceramic artist, Stadtschläining, Austria

“Ich arbeite sehr gerne mit PRNI 4002 und PRNF 4005. Die Massen haben ihren eigenen Charakter, die beim Arbeiten auf der Scheibe besonders gut in Erscheinung treten. Bei frei geformten Objekten können sehr spezielle Strukturen und Oberflächen entstehen, die mit anderen Massen nur schwer zum Ausdruck kommen”.

I really enjoy working with PRNI and PRNF. These clays have their own character that is noticeable especially working at the wheel. In modeled objects, structures and very special surfaces that are very difficult to achieve with other clays can be created.



# Specialty Clays and Porcelain

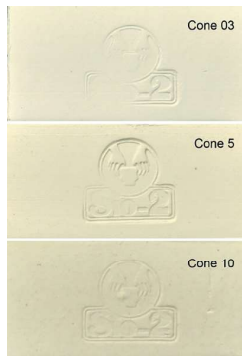


Jowita Bartosz  
PRGI + PCLI



## PCLI

### Stoneware Paper Clay with Impalpable Grog | Cone 02-8



Stoneware paper clay body with 30% impalpable grog (up to 80 Mesh). Formulated for artistic ceramics, it is unique for modelling, thanks to its exceptional plasticity. It is especially suitable for making impossible shapes with difficult drying. The presence of paper fibres inside avoid formation of cracks and problems of deformations, and leads PCL clay to surprising artistic possibilities. Odorless. Available in extruded body (moist form).

Firing range .....	Cone 02-8
Biscuit .....	Cone 06
Water content .....	24%
Plasticity (IP Atterberg) .....	27
Carbonate content (CaCO <sub>3</sub> ) .....	0%
Drying shrinkage .....	7.2%
Firing shrinkage at Cone 5 .....	6.0%
Porosity (water absorption) at Cone 5 .....	4.2%
Dry bending strength .....	5.2 N/mm <sup>2</sup>
Fired bending strength at Cone 5 .....	39.5 N/mm <sup>2</sup>
Thermal coefficient (α25-500°C) .....	53.7×10 <sup>-7</sup> °C <sup>-1</sup>

Item Number .....	14 210 201
UPC .....	8422830142019
Supply .....	Film-wrapped pack + carton box
Packing weight .....	27.6 lb (12.5 kg)



PCLI Daniel Camacho Dela Hoz 'Preocupación'



PCLI Suzanne Altzweig 'Turquoise Vessel'



PCLI María Oriza 'Flor Fractal'

## White Porcelain | Cone 6-8

Aneto is translucent white porcelain body which stands out for its high plasticity, and makes it exceptional for wheel-throwing and modeling. Its formula is very stable and provides a secure firing range between Cone 6 and Cone 8. Available in extruded body (moist form). Supplied in a 11 lb cylindrical film-wrapped pack into a carton box.

Firing range .....	Cone 6-8
Biscuit .....	Cone 06
Water content .....	21%
Plasticity (IP Atterberg) .....	11
Carbonate content (CaCO <sub>3</sub> ) .....	0%
Drying shrinkage .....	4.0%
Firing shrinkage at Cone 7 .....	9.8%
Porosity (water absorption) at Cone 7 .....	0.0%
Dry bending strength .....	3.1 N/mm <sup>2</sup>
Fired bending strength at Cone 7 .....	45.2 N/mm <sup>2</sup>
Thermal coefficient (α25-500°C) .....	59.2×10 <sup>-7</sup> °C <sup>-1</sup>

Item Number .....	16 000 201
UPC .....	8422830160013
Supply .....	Film-wrapped pack + carton box
Packing weight .....	11 lb (5 kg)

## Aneto



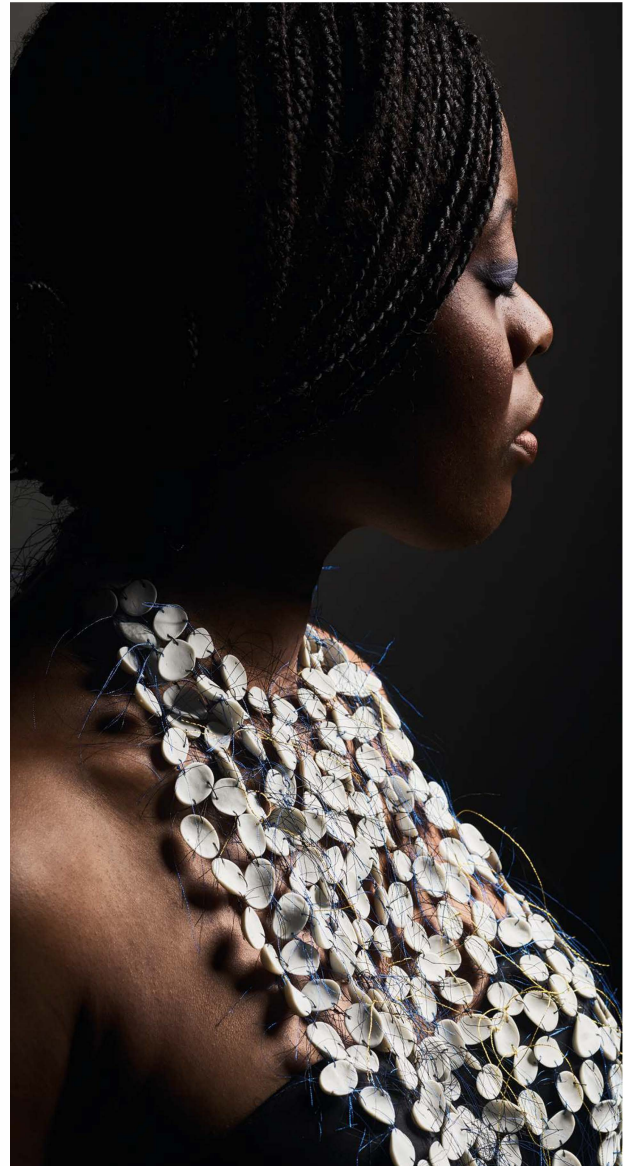


**Corrie Bain**  
Ceramic artist, born in Scotland, brought up in Greece and based in Barcelona

"I've worked with Sio-2 clays for about 8 years, and feel the company has put a lot of effort and research into producing high-standard, reliable clays for an international market. The first clays I used were the white (PRAI), brown (PRGI) and black (PRNI) stonewares, which I found to be very versatile, good quality clays for my throwing, handbuilding and sculptural work. I now mostly work with Aneto, Black Ice, and Upsala (blue) porcelains because of the range of colours and forms I can produce with them".

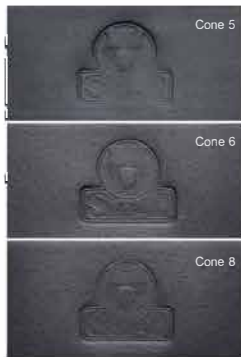


ANETO Corrie Bain (@Sylvain Deleu)



ANETO Patricia Tamayo Pérez 'Qui M'Ha Tocat' ©Jesus Arenas

# Black Ice Black Porcelain | Cone 6-7



Black Ice is black porcelain body noted for its beautiful black graphite fired color. It has high plasticity, which makes it ideal for wheel-throwing and modeling. Its formula is very stable and provides a secure firing range between Cone 6 and Cone 7 (oxidizing atmosphere). Suitable for tableware (food-safe), according to ISO 6486. Available in extruded body (moist form). Supplied in a 11 lb cylindrical film-wrapped pack into a carton box.

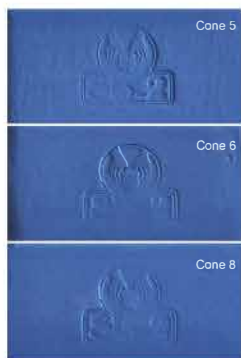
Firing range.....	Cone 6-7
Biscuit.....	Cone 06
Water content.....	20%
Plasticity (IP Atterberg).....	11
Carbonate content (CaCO <sub>3</sub> ).....	0%
Drying shrinkage.....	5.4%
Firing shrinkage at Cone 6.....	10.3%
Porosity (water absorption) at Cone 6.....	0.0%
Dry bending strength.....	3.1 N/mm <sup>2</sup>
Fired bending strength at Cone 6.....	39.8 N/mm <sup>2</sup>
Thermal coefficient (α25-500°C).....	54.3×10 <sup>-7</sup> °C <sup>-1</sup>

Item Number.....	16 100 201
UPC.....	8422830161010
Supply.....	Film-wrapped pack + carton box
Packing weight.....	11 lb (5 kg)



**FOOD SAFE**

# Upsala Blue Porcelain | Cone 6-7



Upsala is a unique blue porcelain noted for its beautiful cobalt blue. It has high plasticity, which makes it ideal for wheel-throwing and modeling. Its formula is very stable and provides a secure firing range between Cone 6 and Cone 7 (oxidizing atmosphere). Suitable for tableware (food-safe), according to ISO 6486. Available in extruded body (moist form). Supplied in a 11 lb cylindrical film-wrapped pack into a carton box.

Firing range.....	Cone 6-7
Biscuit.....	Cone 06
Water content.....	21%
Plasticity (IP Atterberg).....	11
Carbonate content (CaCO <sub>3</sub> ).....	0%
Drying shrinkage.....	5.2%
Firing shrinkage at Cone 6.....	10.4%
Porosity (water absorption) at Cone 6.....	0.0%
Dry bending strength.....	3.3 N/mm <sup>2</sup>
Fired bending strength at Cone 6.....	47.2 N/mm <sup>2</sup>
Thermal coefficient (α25-500°C).....	58.3×10 <sup>-7</sup> °C <sup>-1</sup>

Item Number.....	16 200 201
UPC.....	8422830162017
Supply.....	Film-wrapped pack + carton box
Packing weight.....	11 lb (5 kg)



**FOOD SAFE**



BLACK ICE Olivia Walker (©Sylvain Deleu)



**Olivia Walker**  
Ceramic artist,  
Totnes (Devon), England

"I very much enjoy working with SIO-2 clays for the variety of tones and body that they offer. I work mainly with the SIO-2 porcelains - Aneto and Black Ice, and find that they are both excellent throwing bodies which enable me to create large pieces of work on the wheel. As well as using these clays separately, I also mix them together to create a beautiful range of greys".

## Porcelain Paper Clay | Cone 6-8

Cellulain is a translucent white porcelain paper clay which stands out for its high plasticity, what makes it exceptional for modelling. It is especially designed for creating impossible shapes with porcelain. The presence of paper fibers inside avoid formation of cracks and deformation problems. Its formula is very stable and provides a secure firing range between Cone 6 and Cone 8. Available in extruded body. Supplied in a 11 lb cylindrical film-wrapped pack into a carton box.

Firing range .....	Cone 6-8
Biscuit .....	Cone 06
Water content .....	26%
Plasticity (IP Atterberg) .....	11
Carbonate content (CaCO <sub>3</sub> ) .....	0%
Drying shrinkage .....	4.4%
Firing shrinkage at Cone 7 .....	11.4%
Porosity (water absorption) at Cone 7 .....	2.8%
Dry bending strength .....	4.5 N/mm <sup>2</sup>
Fired bending strength at Cone 7 .....	21.0 N/mm <sup>2</sup>
Thermal coefficient (α25-500°C) .....	58.8×10 <sup>-7</sup> °C <sup>-1</sup>
Item Number .....	16 300 201
UPC .....	8422830163014
Supply .....	Film-wrapped pack + carton box
Packing weight .....	11 lb (5 kg)

## Cellulain™



UPSALA Charlotte Smith



CELLULAIN® Penelope Vallejo

### Penélope Vallejo

Investigadora en el mundo cerámico,  
Santa Maria de Palautordera, Barcelona

“La porcelana con pasta de papel nos abre una ventana al juego, concediéndonos un espacio en el que ampliamos los límites de las pastas convencionales gracias al efecto de la celulosa. Con Cellulain™ puedo trabajar tanto en el torno como con técnicas de modelado y obtener resultados que destacan por su translucidez y delicadeza”.

Porcelain paper clay gives us an opportunity to experiment. It offers a space in which we widen the limits of the conventional ceramic bodies because of the effect of cellulose. With Cellulain™ I am able to work with the potter's wheel or with modelling techniques and obtain results that highlight for their translucency and delicacy.





## 3D Printing Clays



## PRAI 3D Stoneware for 3D Printing | Cone 6-10



The popular PRAI, high fire white body with 40% impalpable grog (up to 80 Mesh) adapted for 3D printing. Its particular white ivory colour after firing is much appreciated and provides an excellent ware for glazes and colouring oxides. Besides, its characteristics offer an excellent behaviour during drying and firing. Available in extruded body with the ideal humidity for 3D printing. Supplied in a 11 lb cylindrical film-wrapped pack into a carton box.

Firing range .....	Cone 6-10
Biscuit .....	Cone 06
Water content .....	22%
Plasticity (IP Atterberg) .....	16
Carbonate content (CaCO <sub>3</sub> ) .....	0%
Drying shrinkage .....	8.5%
Firing shrinkage at Cone 10 .....	7.0%
Porosity (water absorption) at Cone 10 .....	0.0%
Dry bending strength .....	3.0 N/mm <sup>2</sup>
Fired bending strength at Cone 10 .....	45.3 N/mm <sup>2</sup>
Thermal coefficient (α <sub>25-500°C</sub> ) .....	52.6×10 <sup>-7</sup> °C <sup>-1</sup>

Item Number .....	13 310 211
UPC .....	8422830133079
Supply .....	Double packaging + carton box
Packing weight .....	11 lb (5 kg)



# Ceramic clays manufacturing process

---

## Clay mining from nature

Clays are natural materials that are extracted from mines and open-pit deposits. The selection and origin of each type of clay depends on its desired physical characteristics (colour, plasticity, melting point, etc.).

## Receiving, mixing and grinding

The clays arrive at the factory in a dump truck and are unloaded into the feed hoppers, where they are mixed and crushed through a continuous process. The result is a clay composition in a crumbled state that combines the specific clay formula to make a ceramic body.

## Clay storage

The clay composition is controlled and stored in the external storage bays. With the storage, the homogenization of the components is obtained and the natural maturation and drying of the clay is favoured.

## Grinding

The ceramic body manufacturing process begins with the dry grinding of the clay composition using pendular mills.

The result is a clayey composition in powder that flows through pipes (pneumatic transport) to the storage silos.

## Dosing, kneading and extrusion

The clay composition is dry mixed with other solid components (grog, minerals, pigments) and is dosed with the liquid phase (water and additives) in an automatic process controlled by sophisticated dosing and weighing systems. The resulting formula is mixed in the kneader, obtaining a body in a plastic state, which is extruded in the form of a compact bar (under vacuum) with an automatically controlled consistency (hardness).

## Packaging and palletizing

The extruded bar is cut into individual blocks (units) of defined and automatically controlled weight. The units travel through a carousel where they are automatically packed, labelled and palletized.

## Storage and dispatch

The palletized ceramic body is stored on shelves until it is dispatched to the customer.



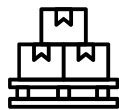
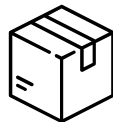




# Supplied in Carton Box



For perfect protection during transport and storage, your SIO-2<sup>®</sup> clay is supplied in film-wrapped pack into a carton box.



[www.sio-2.com](http://www.sio-2.com)

**CLAY & POTTERY SUPPLIES LTD.**

[info@clayandpotterysupplies.com](mailto:info@clayandpotterysupplies.com) | 905-379-5868

[www.clayandpotterysupplies.com](http://www.clayandpotterysupplies.com)

